



PNCX COMPACT CONNECTOR

- ▶ **Ex II 3 G D**
- ▶ Electrical connector for harsh environments and hazardous areas (ATEX): can be used in zones 2 (gas) and 22 (dust)
- ▶ Compact and easy to use.
- ▶ IP66/IP67 watertight (IP68 according to specification).
- ▶ Long life.



The PNCX is a compact and rugged connector designed for all types of aggressive environments (humidity, corrosion, pollution) found in many industrial hazardous areas.

The 5 contacts connection can meet all needs and applications such as lighting. The PNCX connector is both quickly assembled and put into service. Its locking ring resists vibration thus preventing accidental disconnection of the plug on load.

MARECHAL®'s technically advanced silver-nickel butt contact system assures next level performance no matter the conditions.

The PNCX guarantees a long-lasting and electrically efficient connection for your industry.

ELECTRICAL FEATURES

Voltage	440 V
Impulse withstand voltage	5 kV / Pollution degree 3
Contact resistance	< 2mΩ
Permitted current range	4-20 mA / 10 A
Polarity	3P+N+E
Conductors accepted	From 0,75 mm ² to 2,5 mm ² Mechanical terminals
Cable diameter	From 7 to 14 mm (smaller ø available according to specification)

CLIMATIC FEATURES

Ambient temperature	-20 °C to +60 °C
IP protection	IP66/IP67 (IP68 on specification)
Salt, Fog performance	200 hrs minimum not connected More than 1000 h connected
Resistance to fluids	Motor oils, petrol, fats, detergents...

STANDARDS ASPECTS

PNCX connectors comply with:

- The requirements of IEC 61984, IEC 60529, IEC 62262, IEC 60068-2-6, EN/IEC 60079-0, EN/IEC 60079-15 et EN/IEC 60079-31 International standards,
- The European Low Voltage Directive 2006/95/CE,
- The French NF C 15-100 standard,
- The French decree dated 20 December 2011 pertaining to the wiring and operating conditions of movable electrical apparatuses,
- The decrees relating to workers' protection in Belgium, Spain and Italy.

ATHEX Industrial Suppliers

www.athex.eu - info@athex.eu - Tel: +32 (0)3 653 21 82

MECHANICAL FEATURES

Casing & insulator	Glassfibre reinforced thermoplastic UL94 V-0
Butt contacts	Copper alloy with silver-nickel tips
Contact protection	Tinning
Load cycles	More than 2000 cycles
Shock resistance	IK08
Vibration	Frequency 5-1000 Hz, 1g (90 minutes on each critical frequency) according to IEC 60068-2-6

ATEX MARKINGS

ATEX zones	Gas zone 2 and Dust zone 22
ATEX markings	Ex II3GD Ex nAc IIC Ex tc IIIC -20°C ≤ Ta ≤ +60 °C T5 T76°C -20°C ≤ Ta ≤ +50 °C T6 T66°C
Technical manual	MAR X 13.0001

PART NO.

SOCKET-OUTLET
female **PNCX (10 A)**



INLET male
PNCX (10 A)



U_{max} Polarity

440 V 5P

Part no.

06E4007

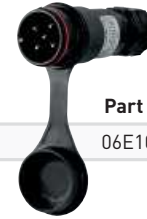
Part no.

06E8007

COUPLER SOCKET
female **PNCX (10 A)**



PLUG male
PNCX (10 A)



U_{max} Polarity

440 V 5P

Part no.

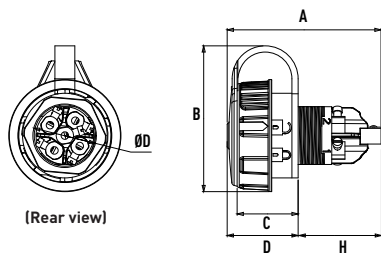
06E3007

Part no.

06E1007

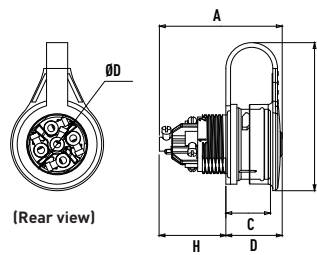
DIMENSIONS

PANEL SOCKET



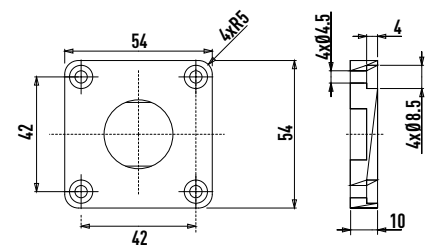
	A	B	C	D	H	ØD max
PNCX	60	75	24,5	28,5	31,5	25,5

MALE INLET



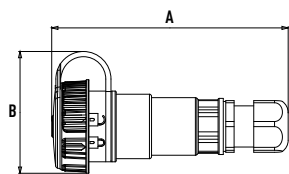
	A	B	C	D	H	ØD max
PNCX	55	75	19	24	31	25,5

ADAPTER PLATE FOR DXN1 ACCESSORIES



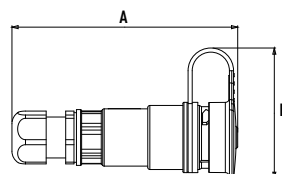
Part no. 251A457-E

COUPLER SOCKET



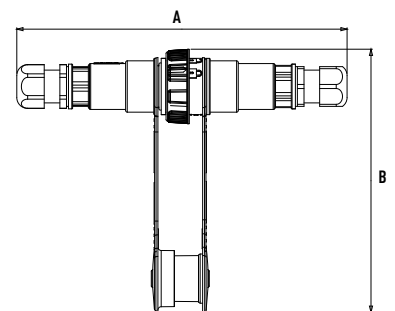
	A	B
PNCX	115	75

PLUG



	A	B
PNCX	110	75

INLINE CONNECTOR



	A	B
PNCX	199	159